

2 QT DEEP SUMP KIT

Revised Installation Guide

for Porsche 986/996/997/987



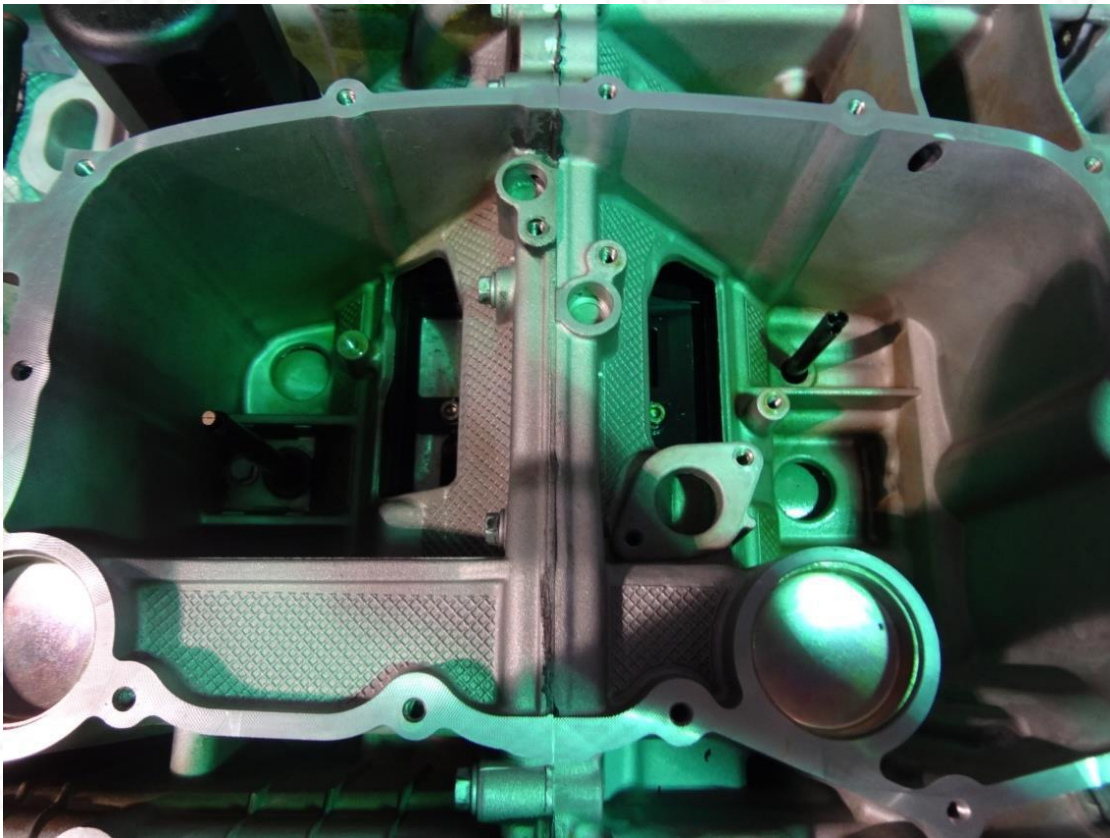
KIT COMPONENTS:

- 2 x Oil tubes (part no. 997.107.016.00)
- 1 x Aluminum baffle gasket
- 1 x Aluminum 2qt pan extension
- 1 x Aluminum pickup spacer
- 3 x Aluminum 1" spacers (not supplied in previous versions of this kit)
- 1 x Pickup spacer o-ring
- 1 x Reinzosil Universal Sealing Compound
- 18 x Hex head bolts (3 told hold plastic baffle, 15 to bolt oil pan in place)

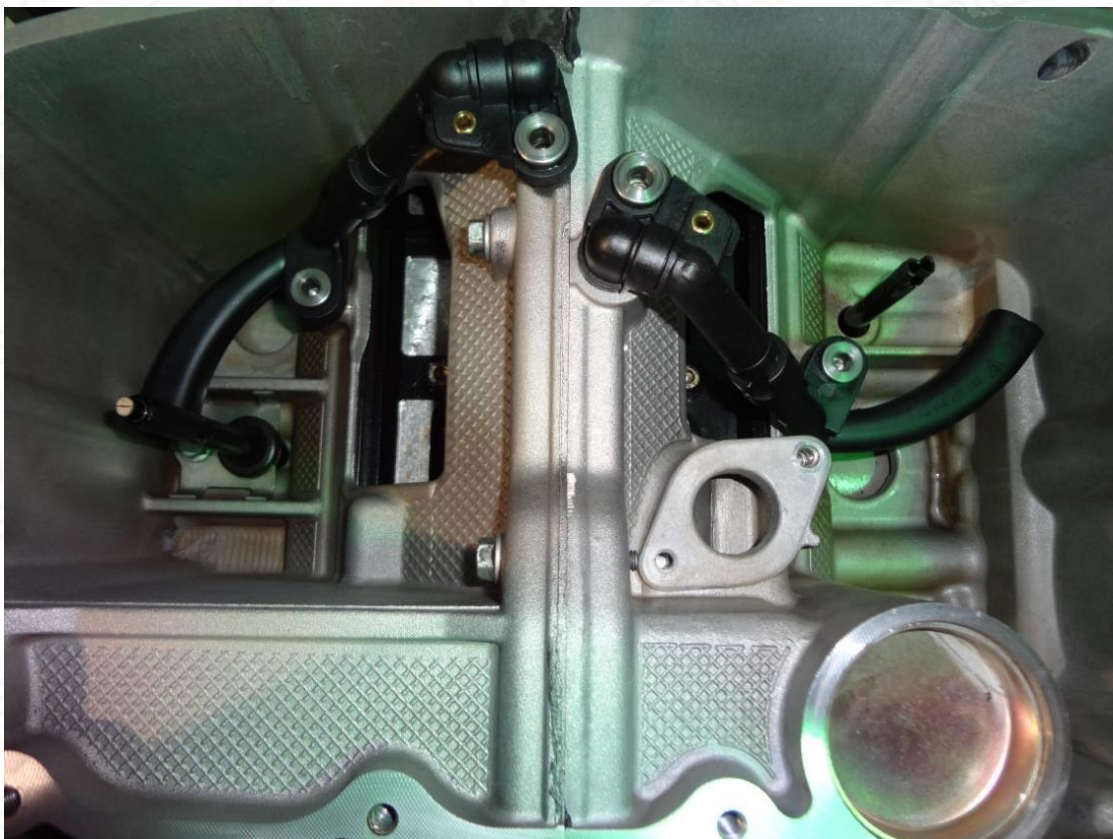
****** These instructions begin after the oil pan and pickup tube have been removed from the vehicle. Most of the images shown on these instructions will be inverted from what you actually see as this engine is off of a vehicle and on an engine stand. In your case, you will be looking at it from underneath the vehicle, so invert the images.

INSTRUCTIONS:

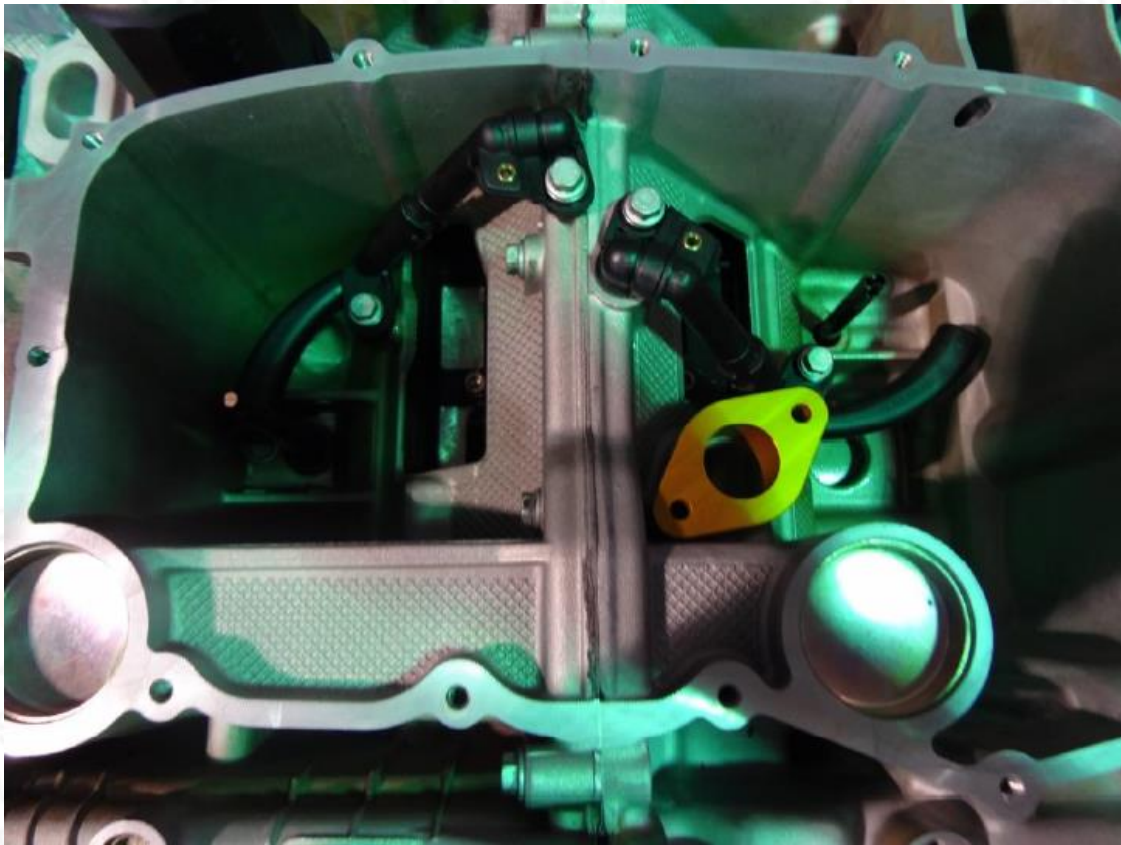
Step 1: Remove oil pan, baffle and baffle and pickup tube.



Step 2: Install two (2) oil pickup tubes (part no 997.107.016.00) as shown below.



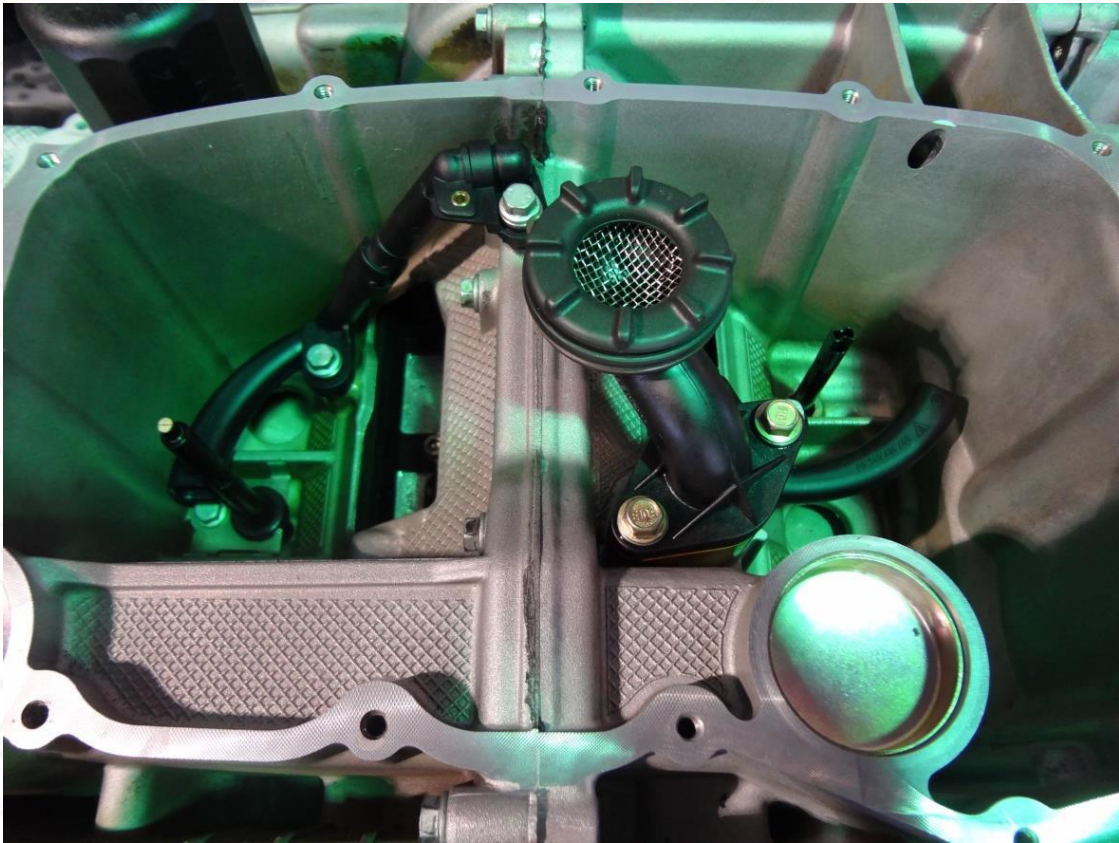
Step 3: Install oil pickup tube aluminum spacer as shown below.



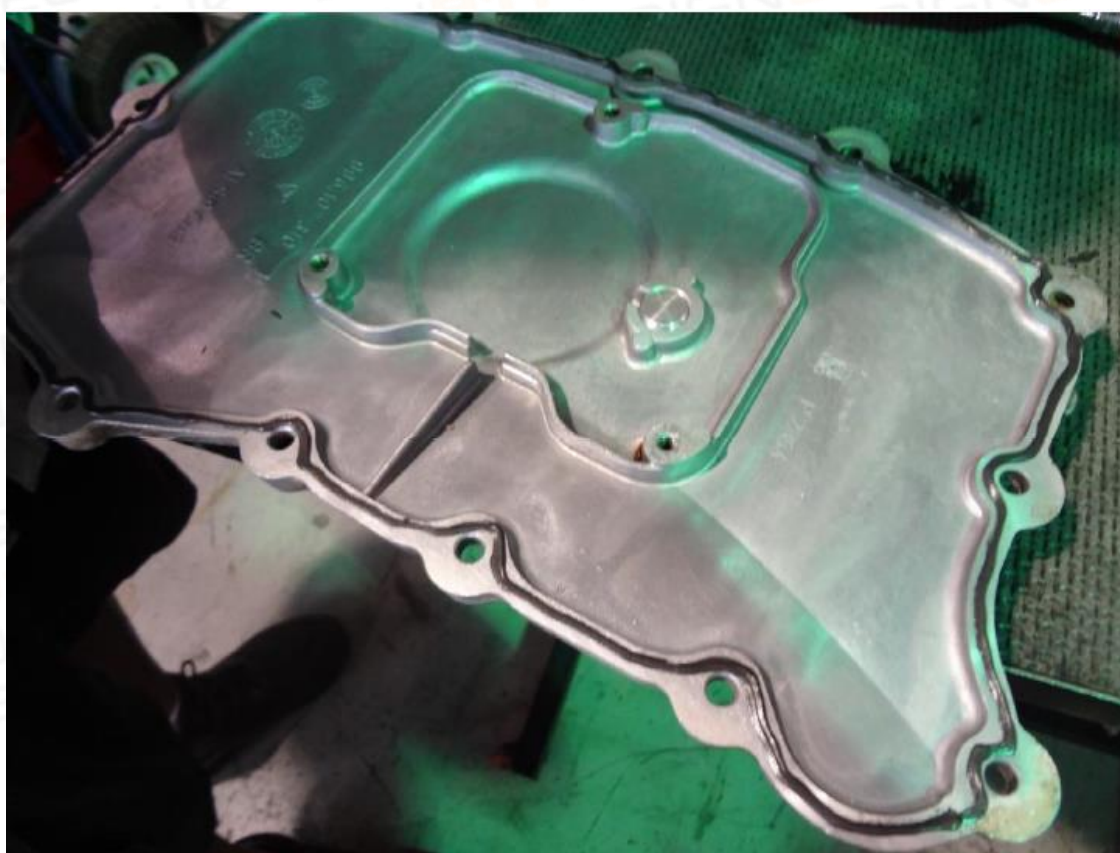
**** Be sure you installed the supplied O-ring between the spacer and engine casting.**



Step 4: Install oil pickup return tube and bolt down using two of the supplied hex bolts.

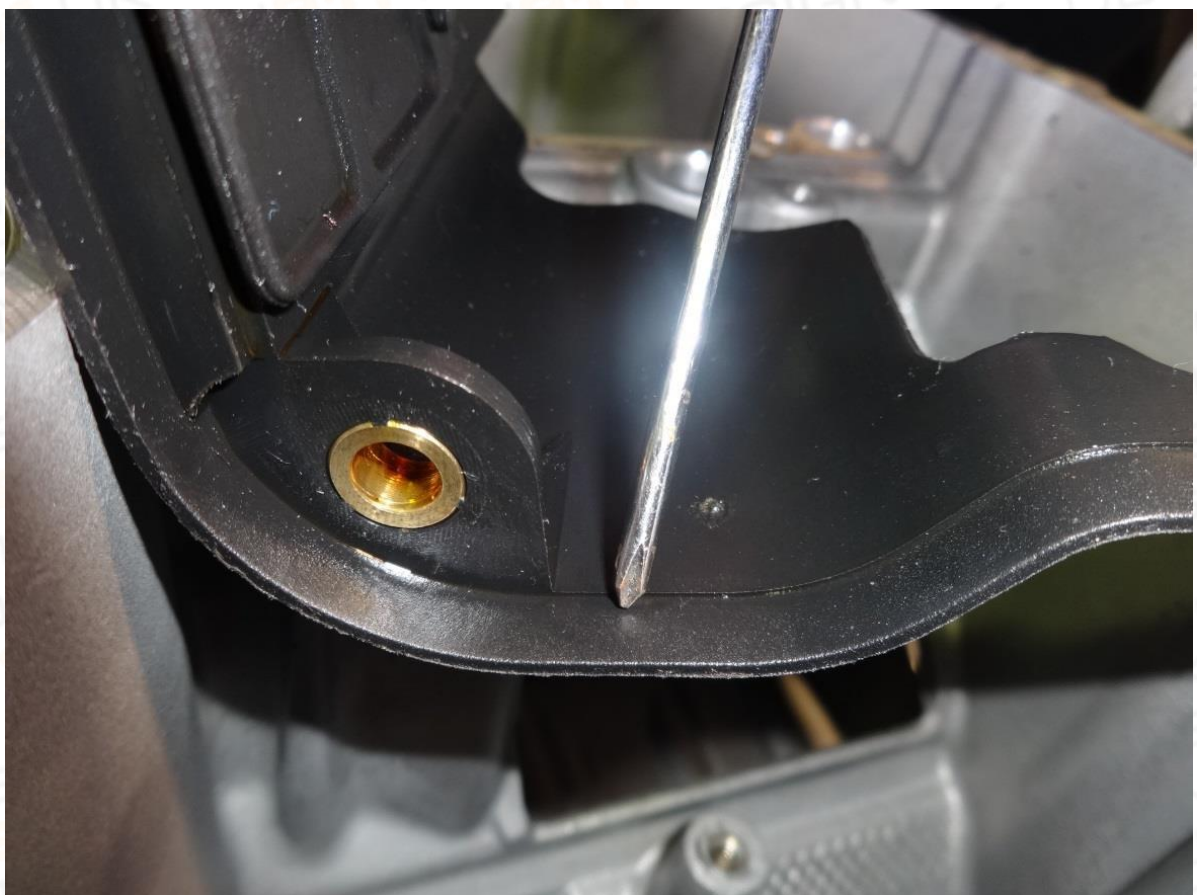


Step 5: Using the provided Reinzosil sealant, apply to edge of oil pan (as shown below)



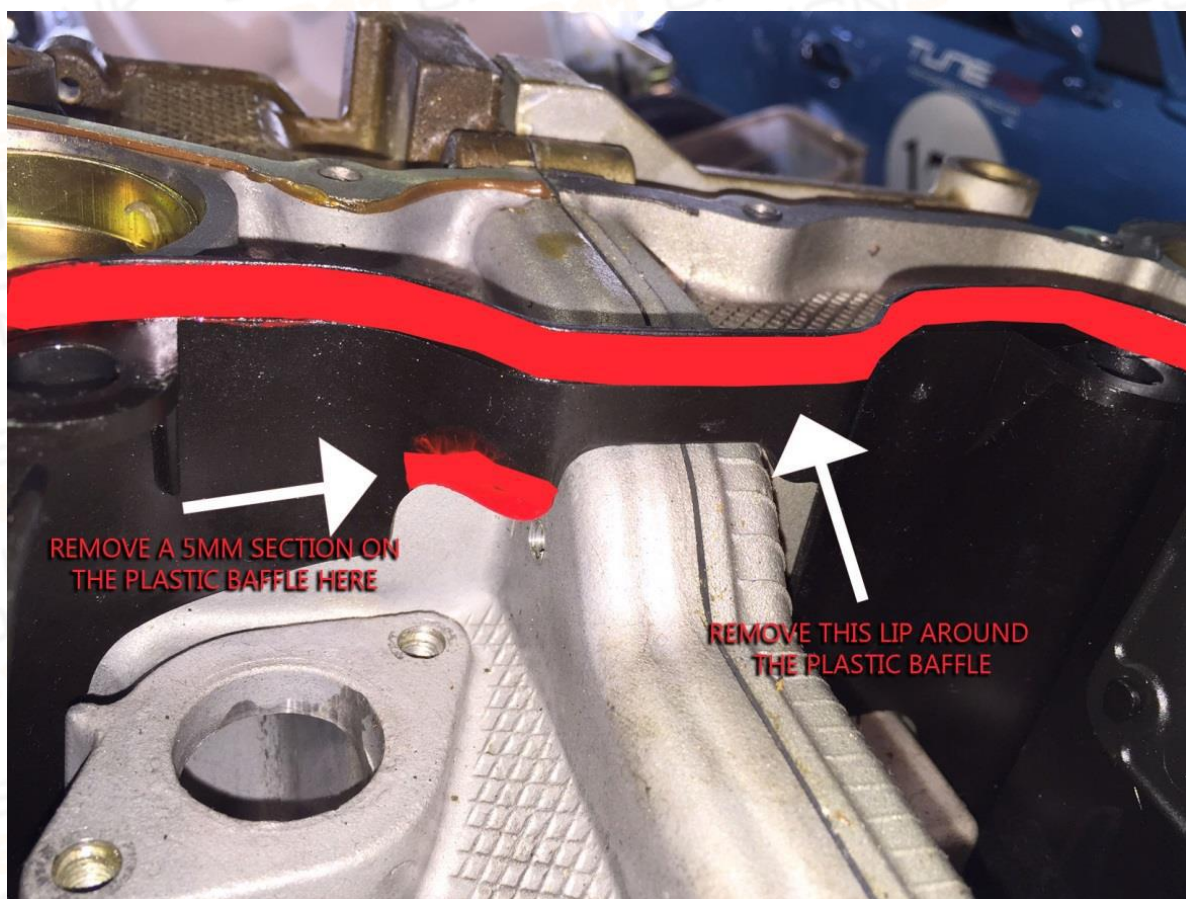
The aluminum baffle spacer does NOT mount to the oil pan itself, it will mount between the engine block and 2 quart extension. The 2 quart extension will mount directly to the oil pan, with the aluminum baffle spacer between block and extension. (see below).

You must modify the original plastic baffle. Remove the outer lip (use the line marked in red as a reference. Remove material all the way to the line, it is about 5mm).



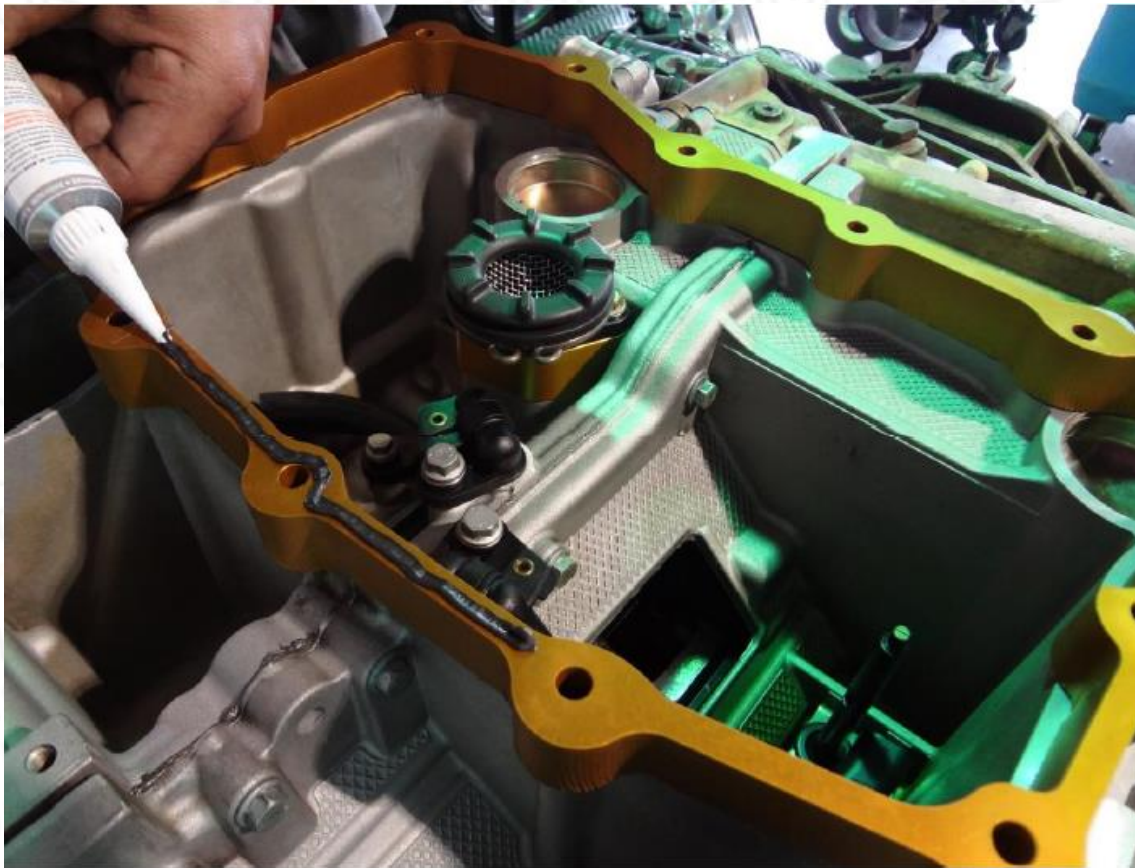


On the same plastic baffle, remove 5mm of the area marked in red in the photo.
(shown above and below)

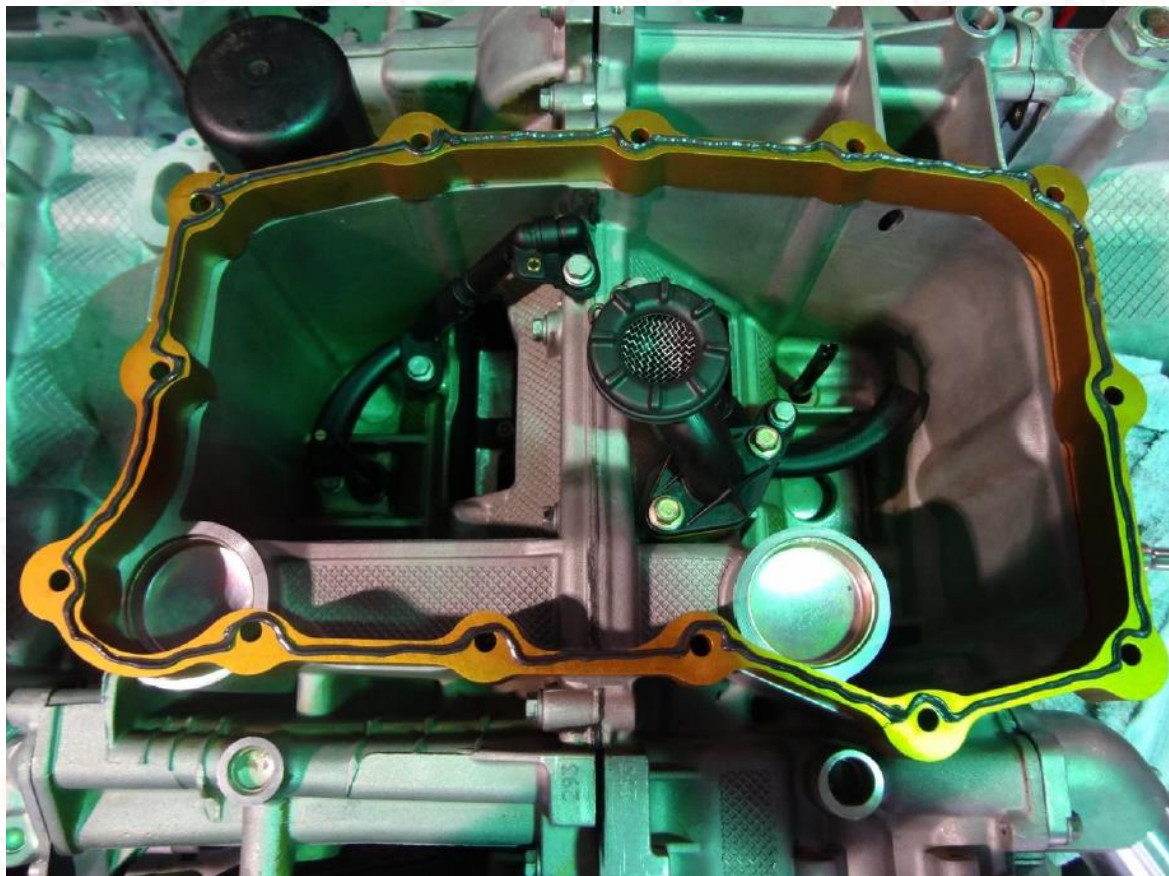


Apply sealant to the extension as shown below.

NOTE: DO NOT MOUNT THE EXTENSION DIRECTLY TO THE BLOCK.



This is what your thin coat of sealant should look like on the extension.



Mount the deep sump extension to the pan. (Note, the photo does not show the pan extension with the sealant. Make sure you have applied the sealant before installing the aluminum baffle on top).



Next, mount the baffle plate to the deep sump extension

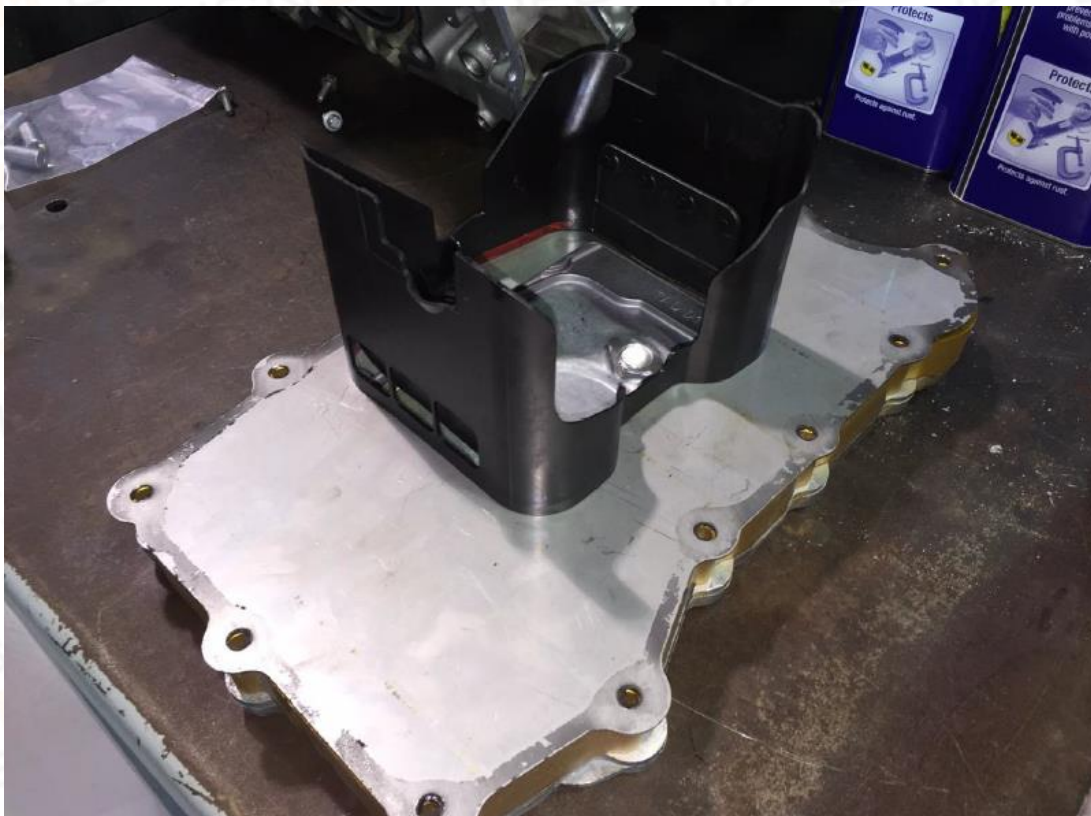


With the baffle in place, align the 3 aluminum 1" spacers between the baffle plate and oil pan.



**** Note:** previous versions of our Deep Sump kits did not come supplied with these 1" aluminum spacers. If your kit did not come with them, you can use locking hardware to secure the plastic baffle in place **

Install the plastic baffle on top of the aluminum baffle plate after it has been modified as mentioned previously in the instructions.



Once you have your deep sump kit looking like this, it is time to install it into the engine block.

With the supplied bolts, install your oil pan and deep sump extension into the block.

Remember, you now have 2 extra quarts of oil to add during your oil fill up.

